

# \$495,000 - 479 Rainbow Crescent, Sherwood Park

MLS® #E4430175

**\$495,000**

8 Bedroom, 3.00 Bathroom, 1,270 sqft  
Single Family on 0.00 Acres

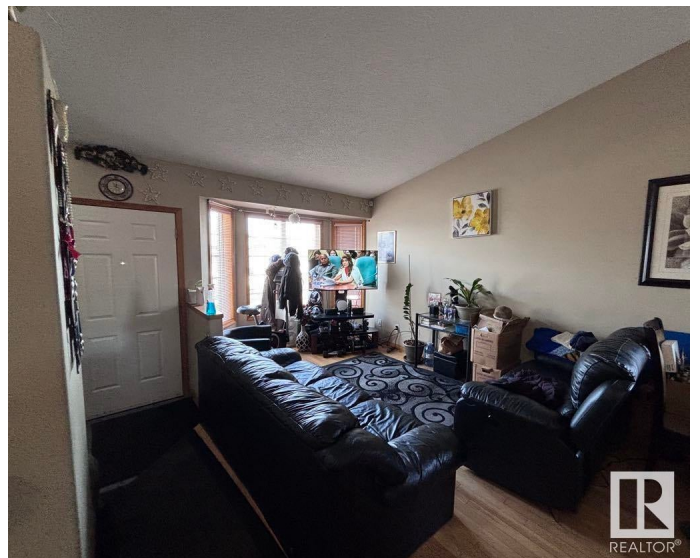
Regency Park (Sherwood Park), Sherwood Park, AB

This 6 bedroom, upgraded 4 level split has over 1900 sf on 3 levels. It features vaulted ceilings, hardwood floors, large eat in kitchen w/pantry, and new shingles in 2023. The front leads to a spacious living room/dining room . With the east facing kitchen, you can enjoy an early morning coffee watching the sunrise. Thereâ€™s a deck off the rear door, overlooking the nice sized, private back yard. The large master bedroom has a 3 pc ensuite & walk in closet. There are two additional bedrooms on the upper floor & a full 4pc bathroom. The 3rd level is finished with a huge Family Room w/fireplace, 4th bedroom or den/playroom, 3 pc bath & convenient laundry facility. The basement level is also finished adding two more bedrooms. With a great location close to schools & playgrounds, this home is perfect for a growing family.

Built in 1995

## Essential Information

|                |           |
|----------------|-----------|
| MLS® #         | E4430175  |
| Price          | \$495,000 |
| Bedrooms       | 8         |
| Bathrooms      | 3.00      |
| Full Baths     | 3         |
| Square Footage | 1,270     |



|            |                        |
|------------|------------------------|
| Acres      | 0.00                   |
| Year Built | 1995                   |
| Type       | Single Family          |
| Sub-Type   | Detached Single Family |
| Style      | 4 Level Split          |
| Status     | Active                 |

### **Community Information**

|             |                              |
|-------------|------------------------------|
| Address     | 479 Rainbow Crescent         |
| Area        | Sherwood Park                |
| Subdivision | Regency Park (Sherwood Park) |
| City        | Sherwood Park                |
| County      | ALBERTA                      |
| Province    | AB                           |
| Postal Code | T8A 5T6                      |

### **Amenities**

|           |  |
|-----------|--|
| Amenities | Deck, Detectors Smoke, Vaulted Ceiling, Vinyl Windows, Solar Equipment |
| Parking   | Double Garage Attached   |

### **Interior**

|                   |  |
|-------------------|--|
| Interior Features | ensuite bathroom   |
| Appliances        | Dishwasher-Built-In, Dryer, Freezer, Garage Control, Garage Opener, Hood Fan, Oven-Microwave, Refrigerator, Storage Shed, Stove-Electric, Washer, Window Coverings |
| Heating           | Forced Air-1, Natural Gas  |
| Fireplace         | Yes  |
| Fireplaces        | Fresh Air  |
| Stories           | 4  |
| Has Basement      | Yes  |
| Basement          | Full, Finished   |

### **Exterior**

|                   |  |
|-------------------|--|
| Exterior          | Wood, Vinyl  |
| Exterior Features | Fenced, Fruit Trees/Shrubs, Landscaped, Playground Nearby, Public Transportation, Schools, Shopping Nearby |
| Roof              | Asphalt Shingles   |
| Construction      | Wood, Vinyl  |

Foundation            Concrete Perimeter

### **Additional Information**

Date Listed            April 8th, 2025

Days on Market      25

Zoning                 Zone 25

DATA IS DEEMED RELIABLE BUT IS NOT GUARANTEED ACCURATE BY THE REALTORS® ASSOCIATION OF EDMONTON. COPYRIGHT 2025 BY THE REALTORS® ASSOCIATION OF EDMONTON. ALL RIGHTS RESERVED. Trademarks are owned or controlled by the Canadian Real Estate Association (CREA) and identify real estate professionals who are members of CREA (REALTOR®, REALTORS®) and/or the quality of services they provide (MLS®, Multiple Listing Service®)

Listing information last updated on May 3rd, 2025 at 3:47pm MDT