

\$394,900 - 214 Southfork Drive, Leduc

MLS® #E4432037

\$394,900

3 Bedroom, 2.50 Bathroom, 1,345 sqft

Single Family on 0.00 Acres

Southfork, Leduc, AB

NO CONDO FEES, End Unit and Air-Conditioning. Inside, you'll discover a bright and inviting interior where luxury vinyl plank flooring ushers you through the main floor. The heart of the home is the stunning kitchen, equipped with a massive quartz island, pristine quartz countertops, chic white cabinets, and sleek stainless steel appliances that are sure to inspire culinary adventures. The open-plan layout ensures the kitchen, dining, and living room flow seamlessly together, making it perfect for hosting or enjoying quiet nights in. Additionally, a convenient half bath completes the ground floor offering. The upper level reveals three bedrooms, including a primary suite that promises a peaceful retreat with its private ensuite and spacious walk-in closet. The exterior doesn't disappoint either, featuring a deck and a double detached garage that is not only insulated but also provides ample parking. This home is located close to school, parks, walking trails and has easy access to the airport.

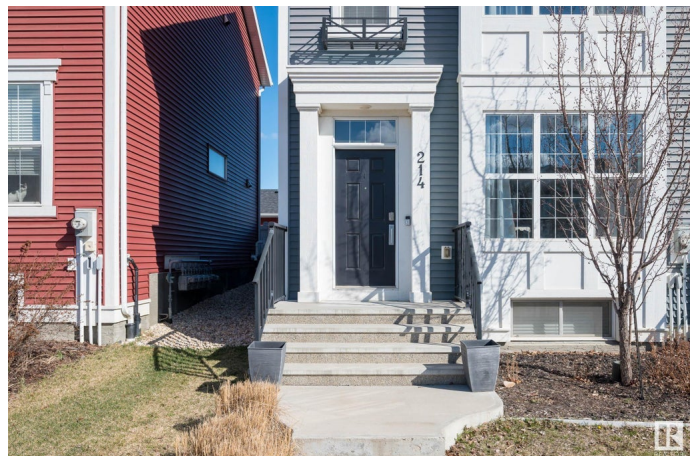
Built in 2015

Essential Information

MLS® # E4432037

Price \$394,900

Bedrooms 3



Bathrooms	2.50
Full Baths	2
Half Baths	1
Square Footage	1,345
Acres	0.00
Year Built	2015
Type	Single Family
Sub-Type	Residential Attached
Style	2 Storey
Status	Active

Community Information

Address	214 Southfork Drive
Area	Leduc
Subdivision	Southfork
City	Leduc
County	ALBERTA
Province	AB
Postal Code	T9E 1G3

Amenities

Amenities	Air Conditioner, Deck
Parking	Double Garage Detached

Interior

Interior Features	ensuite bathroom
Appliances	Air Conditioning-Central, Dishwasher-Built-In, Dryer, Microwave Hood Fan, Refrigerator, Stove-Electric, Washer, Window Coverings, TV Wall Mount
Heating	Forced Air-1, Natural Gas
Stories	2
Has Basement	Yes
Basement	Full, Unfinished

Exterior

Exterior	Wood, Vinyl
Exterior Features	Fenced, Flat Site, Playground Nearby, Schools
Roof	Asphalt Shingles
Construction	Wood, Vinyl

Foundation Concrete Perimeter

School Information

Elementary Father Leduc Catholic
Middle Father Leduc Catholic
High Leduc Comp High School

Additional Information

Date Listed April 22nd, 2025
Days on Market 10
Zoning Zone 81

DATA IS DEEMED RELIABLE BUT IS NOT GUARANTEED ACCURATE BY THE REALTORS® ASSOCIATION OF EDMONTON. COPYRIGHT 2025 BY THE REALTORS® ASSOCIATION OF EDMONTON. ALL RIGHTS RESERVED.Trademarks are owned or controlled by the Canadian Real Estate Association (CREA) and identify real estate professionals who are members of CREA (REALTOR®, REALTORS®) and/or the quality of services they provide (MLS®, Multiple Listing Service®)
Listing information last updated on May 2nd, 2025 at 11:18am MDT