

\$415,000 - 10429 85 Avenue, Edmonton

MLS® #E4432671

\$415,000

1 Bedroom, 1.00 Bathroom, 738 sqft

Single Family on 0.00 Acres

Strathcona, Edmonton, AB

Welcome to 10429 85 Ave NW – a beautifully restored century home just steps from Whyte Avenue and the University of Alberta. Thoughtfully renovated in 2017 and recognized as Alcam’s “Home of the Year,” this property blends timeless character with modern comforts. Inside, you’ll find every detail has been updated – from insulation and electrical, to new subflooring, windows, doors, and high-end finishes throughout. The living room features a cozy fireplace that invites relaxation, and the spacious primary bedroom includes a stylish, modern ensuite with the original clawfoot tub. Additional upgrades include hot water tank and furnace (2020) and shingles on the north side (2020). Outside, enjoy a private backyard oasis complete with a detached garage and a covered carport – perfect for all seasons. Whether you're strolling to local cafes, enjoying the river valley trails, or exploring the vibrant Strathcona community, this location truly has it all.

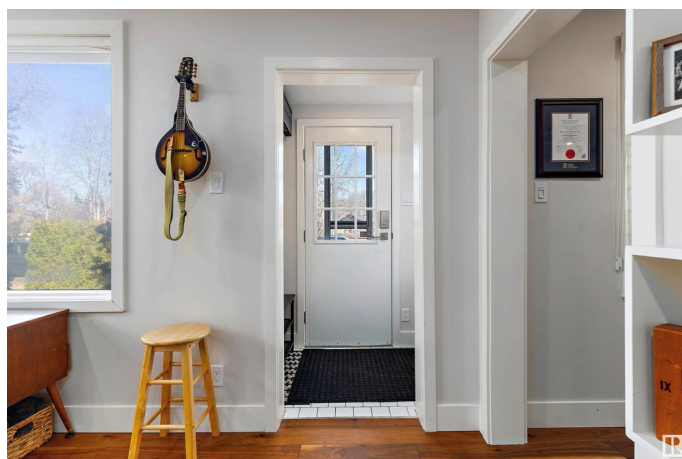
Built in 1914

Essential Information

MLS® # E4432671

Price \$415,000

Bedrooms 1



| | |
|----------------|------------------------|
| Bathrooms | 1.00 |
| Full Baths | 1 |
| Square Footage | 738 |
| Acres | 0.00 |
| Year Built | 1914 |
| Type | Single Family |
| Sub-Type | Detached Single Family |
| Style | Bungalow |
| Status | Active |

Community Information

| | |
|-------------|-----------------|
| Address | 10429 85 Avenue |
| Area | Edmonton |
| Subdivision | Strathcona |
| City | Edmonton |
| County | ALBERTA |
| Province | AB |
| Postal Code | T6E 2K2 |

Amenities

| | |
|----------------|----------------------------------------|
| Amenities | Deck, Fire Pit |
| Parking Spaces | 2 |
| Parking | Single Carport, Single Garage Detached |

Interior

| | |
|--------------|-----------------------------------------------------------------------------------------|
| Appliances | Dishwasher-Built-In, Dryer, Hood Fan, Refrigerator, Stove-Gas, Washer, Window Coverings |
| Heating | Forced Air-1, Natural Gas |
| Fireplace | Yes |
| Fireplaces | Tile Surround |
| Stories | 2 |
| Has Basement | Yes |
| Basement | Partial, Finished |

Exterior

| | |
|-------------------|----------------------------------------------------------------|
| Exterior | Wood, Vinyl |
| Exterior Features | Back Lane, Fenced, Playground Nearby, Schools, Shopping Nearby |
| Roof | Asphalt Shingles |
| Construction | Wood, Vinyl |

Foundation Concrete Perimeter

School Information

Elementary Garneau,Our Lady Mt Carmel
Middle Allendale,Louis St Laurent
High Strathcona, Louis St L

Additional Information

Date Listed April 24th, 2025
Days on Market 7
Zoning Zone 15

DATA IS DEEMED RELIABLE BUT IS NOT GUARANTEED ACCURATE BY THE REALTORS® ASSOCIATION OF EDMONTON. COPYRIGHT 2025 BY THE REALTORS® ASSOCIATION OF EDMONTON. ALL RIGHTS RESERVED.Trademarks are owned or controlled by the Canadian Real Estate Association (CREA) and identify real estate professionals who are members of CREA (REALTOR®, REALTORS®) and/or the quality of services they provide (MLS®, Multiple Listing Service®)
Listing information last updated on May 1st, 2025 at 12:17pm MDT