

## \$469,980 - 1645 Hammond Crescent, Edmonton

MLS® #E4432882

**\$469,980**

4 Bedroom, 3.50 Bathroom, 1,515 sqft  
Single Family on 0.00 Acres

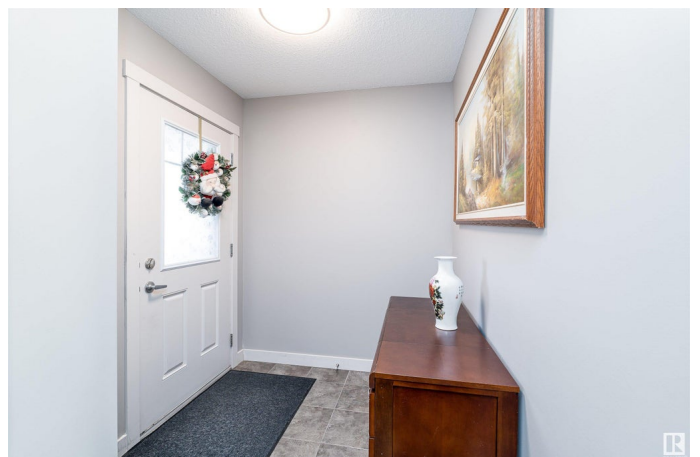
The Hamptons, Edmonton, AB

Welcome to this stunning 1,515 sq.ft. duplex located in the desirable Hampton community of Edmonton! Built in 2013, this well-maintained home features a bright, open-concept main floor with a cozy living room, a modern kitchen with ample cabinetry, a large walk-in pantry, and a convenient half bathroom. Upstairs, you'll find 3 spacious bedrooms and 2 full bathrooms, including a primary suite with a walk-in closet and private ensuite. The fully finished basement adds even more value, offering a 4th bedroom, a dedicated office, and a full bathroom—ideal for guests, remote work, or extended family. Moreover, Enjoy the ease of a double attached garage. Commuting is a breeze with quick access to Anthony Henday Ring Road, and you're just minutes away from West Edmonton Mall, Windermere Shopping Centre, and COSTCO—putting shopping, dining, and travel all within reach. This move-in-ready duplex is the perfect blend of space, style, and convenience—ideal for young families, professionals, or investors alike.

Built in 2013

### Essential Information

MLS® #	E4432882
Price	\$469,980



Bedrooms	4
Bathrooms	3.50
Full Baths	3
Half Baths	1
Square Footage	1,515
Acres	0.00
Year Built	2013
Type	Single Family
Sub-Type	Half Duplex
Style	2 Storey
Status	Active

### Community Information

Address	1645 Hammond Crescent
Area	Edmonton
Subdivision	The Hamptons
City	Edmonton
County	ALBERTA
Province	AB
Postal Code	T6M 0L8

### Amenities

Amenities	Deck
Parking	Double Garage Attached

### Interior

Interior Features	ensuite bathroom
Appliances	Dishwasher-Built-In, Dryer, Garage Opener, Hood Fan, Refrigerator, Stove-Electric, Washer
Heating	Forced Air-1, Natural Gas
Stories	3
Has Basement	Yes
Basement	Full, Finished

### Exterior

Exterior	Wood, Vinyl
Exterior Features	Fenced
Roof	Asphalt Shingles
Construction	Wood, Vinyl

Foundation                      Concrete Perimeter

**Additional Information**

Date Listed                      April 25th, 2025

Days on Market                6

Zoning                            Zone 58

DATA IS DEEMED RELIABLE BUT IS NOT GUARANTEED ACCURATE BY THE REALTORS® ASSOCIATION OF EDMONTON. COPYRIGHT 2025 BY THE REALTORS® ASSOCIATION OF EDMONTON. ALL RIGHTS RESERVED.Trademarks are owned or controlled by the Canadian Real Estate Association (CREA) and identify real estate professionals who are members of CREA (REALTOR®, REALTORS®) and/or the quality of services they provide (MLS®, Multiple Listing Service®)

Listing information last updated on May 1st, 2025 at 5:17am MDT