

\$500,000 - 9351 222 Street, Edmonton

MLS® #E4433997

\$500,000

3 Bedroom, 2.50 Bathroom, 1,574 sqft

Single Family on 0.00 Acres

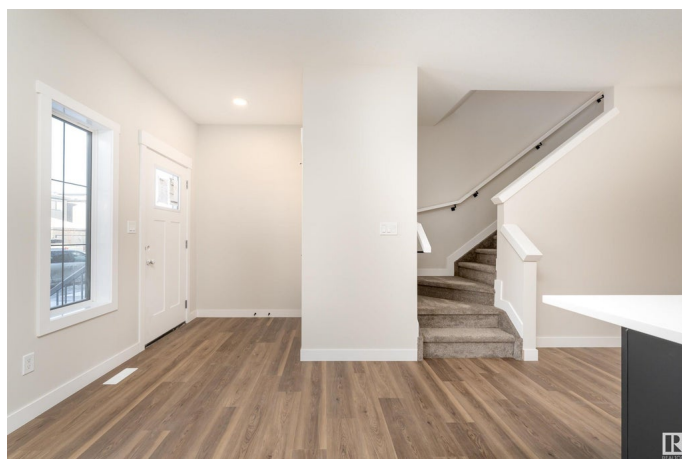
Secord, Edmonton, AB

This 2-storey home located in Secord, Edmonton. With 1,511 sq. ft. of living space, the main floor welcomes you with a cozy living room, a bright dining area, a well-equipped kitchen featuring a pantry, a practical mudroom, and a 2pc bathroom. Upstairs, unwind in the bonus room or retreat to the primary bedroom with its own 3pc ensuite and walk-in closet. Two additional bedrooms and a 4pc bathroom complete the upper level, making this home a warm and inviting space for your family. 200AMP service adds convenience and practicality to this home.

Built in 2025

Essential Information

MLS® #	E4433997
Price	\$500,000
Bedrooms	3
Bathrooms	2.50
Full Baths	2
Half Baths	1
Square Footage	1,574
Acres	0.00
Year Built	2025
Type	Single Family
Sub-Type	Detached Single Family
Style	2 Storey



Status Active

Community Information

Address 9351 222 Street
Area Edmonton
Subdivision Secord
City Edmonton
County ALBERTA
Province AB
Postal Code T5T 7T1

Amenities

Amenities Detectors Smoke, No Animal Home, No Smoking Home
Parking No Garage

Interior

Interior Features ensuite bathroom
Appliances See Remarks
Heating Forced Air-1, Natural Gas
Stories 2
Has Basement Yes
Basement Full, Unfinished

Exterior

Exterior Wood, Vinyl
Exterior Features Playground Nearby, Schools, Shopping Nearby
Roof Asphalt Shingles
Construction Wood, Vinyl
Foundation Concrete Perimeter

Additional Information

Date Listed May 1st, 2025
Days on Market 50
Zoning Zone 58

DATA IS DEEMED RELIABLE BUT IS NOT GUARANTEED ACCURATE BY THE REALTORS® ASSOCIATION OF EDMONTON. COPYRIGHT 2025 BY THE REALTORS® ASSOCIATION OF EDMONTON. ALL RIGHTS RESERVED.Trademarks are owned or controlled by the Canadian Real Estate Association (CREA) and identify real estate professionals who are members of CREA (REALTOR®, REALTORS®) and/or the quality of services they provide (MLS®, Multiple Listing Service®)
Listing information last updated on June 20th, 2025 at 10:18am MDT