

\$550,000 - 1935 121 Street, Edmonton

MLS® #E4434255

\$550,000

3 Bedroom, 3.50 Bathroom, 1,858 sqft

Single Family on 0.00 Acres

Rutherford (Edmonton), Edmonton, AB

EXCEPTIONAL family home available in beautiful Rutherford! This 2 story home offers - 3 bedrooms, open bonus room and finished basement. The main floor is bright and open with, a window filled living room, dining area, kitchen and a gas fireplace. Off the dining area is access to large landscaped yard with a composite deck and shed. Upstairs you'll find an expanded bonus room with grand windows and vaulted ceilings. There's a large primary with 5 piece spa bathroom ensuite featuring a soaker tub and separate shower. Two additional perfectly sized bedrooms and a main 4 piece bath complete the upstairs.

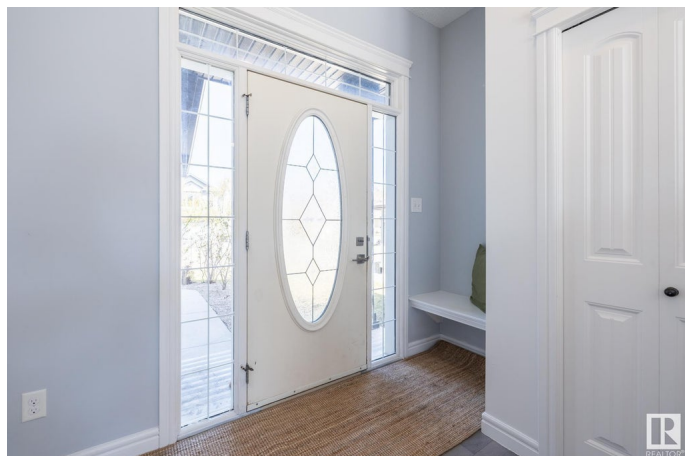
*Newer furnace, dishwasher and fridge.

*Tankless water, Central AC * Basement reno 2022 Close to great schools, shopping and access to Henday and HWY 2

Built in 2006

Essential Information

MLS® #	E4434255
Price	\$550,000
Bedrooms	3
Bathrooms	3.50
Full Baths	3
Half Baths	1
Square Footage	1,858
Acres	0.00



Year Built	2006
Type	Single Family
Sub-Type	Detached Single Family
Style	2 Storey
Status	Active

Community Information

Address	1935 121 Street
Area	Edmonton
Subdivision	Rutherford (Edmonton)
City	Edmonton
County	ALBERTA
Province	AB
Postal Code	T6W 0A6

Amenities

Amenities	Air Conditioner, Deck
Parking	Double Garage Attached

Interior

Interior Features	ensuite bathroom
Appliances	Air Conditioning-Central, Dishwasher-Built-In, Dryer, Garage Control, Storage Shed, Stove-Electric, Washer, Window Coverings, TV Wall Mount
Heating	Forced Air-1, Natural Gas
Stories	3
Has Basement	Yes
Basement	Full, Finished

Exterior

Exterior	Wood, Stone, Vinyl
Exterior Features	Airport Nearby, Fenced, Golf Nearby, Landscaped, Schools, Shopping Nearby
Roof	Asphalt Shingles
Construction	Wood, Stone, Vinyl
Foundation	Concrete Perimeter

Additional Information

Date Listed	May 1st, 2025
Days on Market	11

Zoning	Zone 55
HOA Fees	150
HOA Fees Freq.	Annually

DATA IS DEEMED RELIABLE BUT IS NOT GUARANTEED ACCURATE BY THE REALTORS® ASSOCIATION OF EDMONTON. COPYRIGHT 2025 BY THE REALTORS® ASSOCIATION OF EDMONTON. ALL RIGHTS RESERVED. Trademarks are owned or controlled by the Canadian Real Estate Association (CREA) and identify real estate professionals who are members of CREA (REALTOR®, REALTORS®) and/or the quality of services they provide (MLS®, Multiple Listing Service®)

Listing information last updated on May 12th, 2025 at 4:47am MDT