

# \$374,900 - 4 Gilby Street, Sherwood Park

MLS® #E4442000

**\$374,900**

3 Bedroom, 1.00 Bathroom, 1,076 sqft  
Single Family on 0.00 Acres

Glen Allan, Sherwood Park, AB

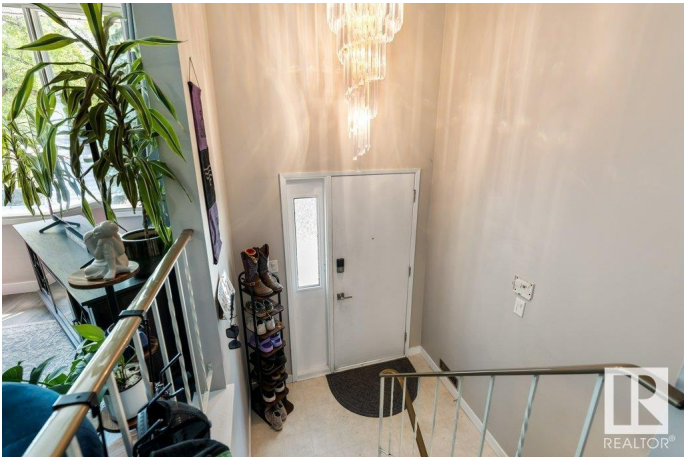
Great opportunity for home ownership! Check out this great Bi-level located in a crescent and is ready for new owners. Since 2018 the following upgrades have been completed: Shingles (approx. 6 years ago), new drain tile and cleanouts, main floor gutted and refinished, flooring, kitchen, bathroom, ext. back porch and stairs, electrical panel, and hwt. The unspoiled basement is ready for your personal touches and has a rough in for a second bathroom. Main floor has 3 bedrooms, 1 bathroom and is ready for you!

Built in 1973

## Essential Information

MLS® #	E4442000
Price	\$374,900
Bedrooms	3
Bathrooms	1.00
Full Baths	1
Square Footage	1,076
Acres	0.00
Year Built	1973
Type	Single Family
Sub-Type	Detached Single Family
Style	Bi-Level
Status	Active

## Community Information



Address	4 Gilby Street
Area	Sherwood Park
Subdivision	Glen Allan
City	Sherwood Park
County	ALBERTA
Province	AB
Postal Code	T8A 2X2

### **Amenities**

Amenities	See Remarks
Parking Spaces	2
Parking	No Garage

### **Interior**

Appliances	Dishwasher-Built-In, Refrigerator, Stove-Electric
Heating	Forced Air-1, Natural Gas
Stories	1
Has Basement	Yes
Basement	Full, Unfinished

### **Exterior**

Exterior	Wood, Metal, Stucco
Exterior Features	Fenced, Landscaped, Public Transportation, Schools, Shopping Nearby
Roof	Asphalt Shingles
Construction	Wood, Metal, Stucco
Foundation	Concrete Perimeter

### **School Information**

Elementary	Glen Allan Elementary
High	Salisbury High School

### **Additional Information**

Date Listed	June 12th, 2025
Days on Market	7
Zoning	Zone 25

DATA IS DEEMED RELIABLE BUT IS NOT GUARANTEED ACCURATE BY THE REALTORS® ASSOCIATION OF EDMONTON. COPYRIGHT 2025 BY THE REALTORS® ASSOCIATION OF EDMONTON. ALL RIGHTS RESERVED. Trademarks are owned or controlled by the Canadian Real Estate Association (CREA) and identify real estate professionals who are members of CREA (REALTOR®, REALTORS®) and/or the quality of services they provide (MLS®, Multiple Listing Service®)

Listing information last updated on June 19th, 2025 at 7:32pm MDT