

Courtesy Of Godfrey Adirika Of Sterling Real Estate

## \$815,000 - 11230 127 Street, Edmonton

MLS® #E4442138

**\$815,000**

4 Bedroom, 2.50 Bathroom, 1,816 sqft

Single Family on 0.00 Acres

Inglewood (Edmonton), Edmonton, AB

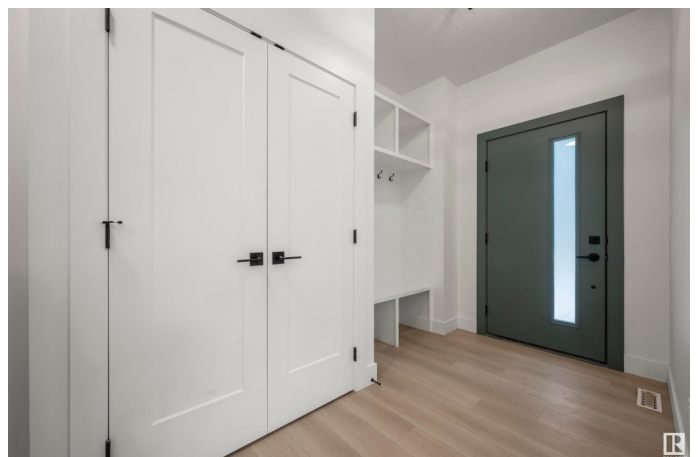
Introducing a Bold, One-of-a-Kind Masterpiece in Inglewood. Discover this brand-new, architecturally striking home located in the heart of Inglewood—one of Edmonton's most vibrant and desirable communities. Wrapped in bold black corrugated steel, this home is the first and only of its kind in the neighbourhood, making a powerful architectural statement. The curb appeal is immediate, with floating concrete steps guiding you toward a clean, modern design that continues throughout the home. Inside, you'll find a custom walk-in master shower with luxurious finishes, a designer kitchen outfitted with sleek cabinetry and elegant stone countertops, and thoughtfully placed lighting that complements the home's open-concept layout and contemporary aesthetic. Thoughtfully designed for both beauty and performance, the home includes: Air conditioning. Legal suite with a separate entrance. 10 foot back deck. Perfectly located on a quiet street, lush parks, and community green spaces, this is more than a home.

Built in 2025

### Essential Information

MLS® # E4442138

Price \$815,000



Bedrooms	4
Bathrooms	2.50
Full Baths	2
Half Baths	1
Square Footage	1,816
Acres	0.00
Year Built	2025
Type	Single Family
Sub-Type	Detached Single Family
Style	2 Storey
Status	Active

### Community Information

Address	11230 127 Street
Area	Edmonton
Subdivision	Inglewood (Edmonton)
City	Edmonton
County	ALBERTA
Province	AB
Postal Code	T5M 0T6

### Amenities

Amenities	Air Conditioner
Parking	Double Garage Detached

### Interior

Interior Features	ensuite bathroom
Appliances	Air Conditioning-Central
Heating	Forced Air-1, Natural Gas
Fireplace	Yes
Fireplaces	See Remarks
Stories	2
Has Suite	Yes
Has Basement	Yes
Basement	Full, Finished

### Exterior

Exterior	Wood, Metal
Exterior Features	See Remarks

Roof	Asphalt Shingles
Construction	Wood, Metal
Foundation	Concrete Perimeter

**Additional Information**

Date Listed	June 12th, 2025
Days on Market	9
Zoning	Zone 07

DATA IS DEEMED RELIABLE BUT IS NOT GUARANTEED ACCURATE BY THE REALTORS® ASSOCIATION OF EDMONTON. COPYRIGHT 2025 BY THE REALTORS® ASSOCIATION OF EDMONTON. ALL RIGHTS RESERVED.Trademarks are owned or controlled by the Canadian Real Estate Association (CREA) and identify real estate professionals who are members of CREA (REALTOR®, REALTORS®) and/or the quality of services they provide (MLS®, Multiple Listing Service®)

Listing information last updated on June 21st, 2025 at 10:17am MDT