

\$309,900 - 45 603 Watt Boulevard, Edmonton

MLS® #E4442739

\$309,900

2 Bedroom, 2.50 Bathroom, 1,262 sqft

Condo / Townhouse on 0.00 Acres

Walker, Edmonton, AB

Welcome to the family community of Walker!

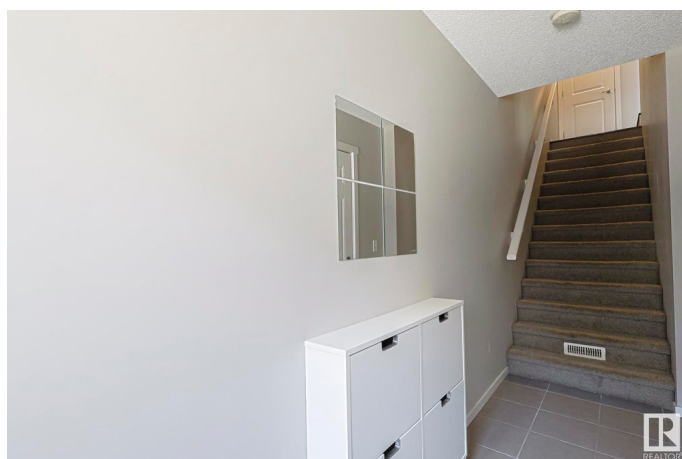
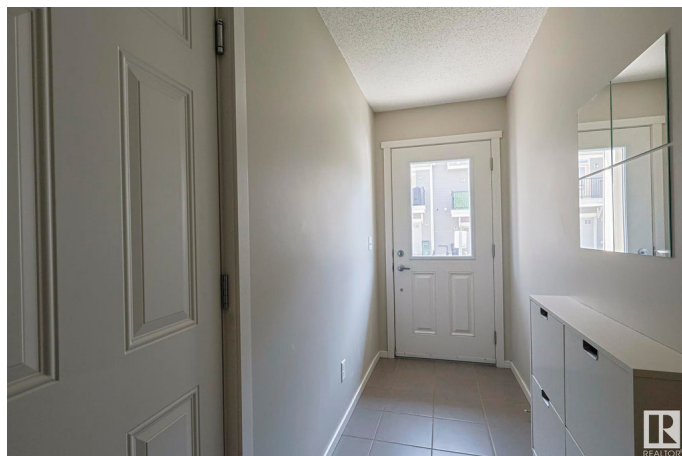
This 2 BED, 2.5 BATH 3 storey townhome has everything that you need. DOUBLE ATTACHED GARAGE, HARDWOOD, 9 FT CEILINGS & GRANITE COUNTER TOPS.

The main floor includes an open floor concept floor plan with 2 piece bath, large living space flowing to the kitchen with access to your balcony. Upstairs you have the laundry with 4 piece bath, large secondary bedroom and primary with 3 piece bath & massive walk-in closet. The lower level includes access to your double attached garage. This home is close to all amenities including South Edmonton Common, Anthony Henday & Edmonton International Airport.

Built in 2009

Essential Information

| | |
|----------------|-----------|
| MLS® # | E4442739 |
| Price | \$309,900 |
| Bedrooms | 2 |
| Bathrooms | 2.50 |
| Full Baths | 2 |
| Half Baths | 1 |
| Square Footage | 1,262 |
| Acres | 0.00 |
| Year Built | 2009 |



| | |
|----------|-------------------|
| Type | Condo / Townhouse |
| Sub-Type | Townhouse |
| Style | 3 Storey |
| Status | Active |

Community Information

| | |
|-------------|-----------------------|
| Address | 45 603 Watt Boulevard |
| Area | Edmonton |
| Subdivision | Walker |
| City | Edmonton |
| County | ALBERTA |
| Province | AB |
| Postal Code | T6X 0P3 |

Amenities

| | |
|-----------|------------------------|
| Amenities | Ceiling 9 ft., Deck |
| Parking | Double Garage Attached |

Interior

| | |
|-------------------|--|
| Interior Features | ensuite bathroom |
| Appliances | Dishwasher-Built-In, Dryer, Refrigerator, Stove-Electric, Washer |
| Heating | Forced Air-1, Natural Gas |
| Stories | 2 |
| Has Basement | Yes |
| Basement | None, No Basement |

Exterior

| | |
|-------------------|--|
| Exterior | Wood, Composition |
| Exterior Features | Golf Nearby, Landscaped, Public Transportation, Schools, Shopping Nearby |
| Roof | Asphalt Shingles |
| Construction | Wood, Composition |
| Foundation | Concrete Perimeter |

Additional Information

| | |
|----------------|-----------------|
| Date Listed | June 17th, 2025 |
| Days on Market | 2 |
| Zoning | Zone 53 |
| Condo Fee | \$227 |

DATA IS DEEMED RELIABLE BUT IS NOT GUARANTEED ACCURATE BY THE REALTORS® ASSOCIATION OF EDMONTON. COPYRIGHT 2025 BY THE REALTORS® ASSOCIATION OF EDMONTON. ALL RIGHTS RESERVED.Trademarks are owned or controlled by the Canadian Real Estate Association (CREA) and identify real estate professionals who are members of CREA (REALTOR®, REALTORS®) and/or the quality of services they provide (MLS®, Multiple Listing Service®)

Listing information last updated on June 19th, 2025 at 7:17pm MDT