

\$549,900 - 9132 67 Avenue, Edmonton

MLS® #E4442884

\$549,900

2 Bedroom, 3.00 Bathroom, 1,194 sqft

Single Family on 0.00 Acres

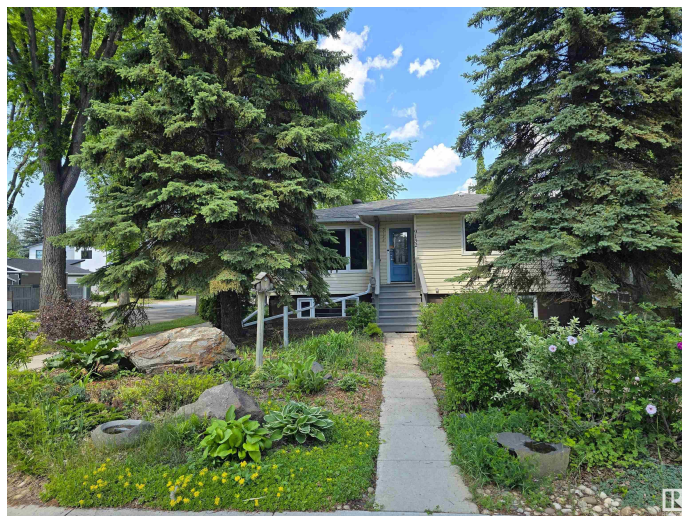
Hazeldean, Edmonton, AB

Stunning Raised Bungalow Steps to Mill Creek Ravine, in the heart of Hazeldean, on a Massive 5,891 SF Corner Lot! Rarely offered in this prime location, this 5 bedroom, 3 bath home offers style, space. The open-concept main floor features a bright living room with gas fireplace & hardwood flooring, a spacious dining area, and a modern kitchen with maple cabinets. The HUGE primary suite includes dual closets & a 4 pc ensuite. Rounding out the main floor is a 2nd bedroom, & an additional 3 pc bath. Downstairs you'll find a large recreation room with big windows, 3 additional bedrooms, & a 3 pc bath. Enjoy beautifully landscaped, low-maintenance yard with a large patio. Double detached garage with private driveway. Steps to Mill Creek Ravine, walking trails, schools, parks, transit, shops & more! This is a gem in a dream location!

Built in 1957

Essential Information

| | |
|----------------|-----------|
| MLS® # | E4442884 |
| Price | \$549,900 |
| Bedrooms | 2 |
| Bathrooms | 3.00 |
| Full Baths | 3 |
| Square Footage | 1,194 |



| | |
|------------|------------------------|
| Acres | 0.00 |
| Year Built | 1957 |
| Type | Single Family |
| Sub-Type | Detached Single Family |
| Style | Bungalow |
| Status | Active |

Community Information

| | |
|-------------|----------------|
| Address | 9132 67 Avenue |
| Area | Edmonton |
| Subdivision | Hazeldean |
| City | Edmonton |
| County | ALBERTA |
| Province | AB |
| Postal Code | T6E 0N3 |

Amenities

| | |
|----------------|-----------------------------------|
| Amenities | Patio, Vinyl Windows, See Remarks |
| Parking Spaces | 4 |
| Parking | Double Garage Detached |

Interior

| | |
|-------------------|---|
| Interior Features | ensuite bathroom |
| Appliances | Dishwasher-Built-In, Dryer, Garage Control, Garage Opener, Oven-Built-In, Oven-Microwave, Refrigerator, Stove-Countertop Electric, Washer, Window Coverings |
| Heating | Forced Air-1, Natural Gas |
| Fireplace | Yes |
| Fireplaces | Mantel, Tile Surround |
| Stories | 2 |
| Has Basement | Yes |
| Basement | Full, Finished |

Exterior

| | |
|-------------------|---|
| Exterior | Wood, Vinyl |
| Exterior Features | Back Lane, Corner Lot, Cul-De-Sac, Fenced, Flat Site, Landscaped, Park/Reserve, Paved Lane, Playground Nearby, Private Setting, Ravine View, Schools, Shopping Nearby |
| Roof | Asphalt Shingles |

| | |
|--------------|--------------------|
| Construction | Wood, Vinyl |
| Foundation | Concrete Perimeter |

School Information

| | |
|------------|--------------------|
| Elementary | St James/Hazeldean |
| Middle | JH Picard/Ottewell |
| High | Strathcona/O'Brien |

Additional Information

| | |
|----------------|-----------------|
| Date Listed | June 18th, 2025 |
| Days on Market | 1 |
| Zoning | Zone 17 |

DATA IS DEEMED RELIABLE BUT IS NOT GUARANTEED ACCURATE BY THE REALTORS® ASSOCIATION OF EDMONTON. COPYRIGHT 2025 BY THE REALTORS® ASSOCIATION OF EDMONTON. ALL RIGHTS RESERVED. Trademarks are owned or controlled by the Canadian Real Estate Association (CREA) and identify real estate professionals who are members of CREA (REALTOR®, REALTORS®) and/or the quality of services they provide (MLS®, Multiple Listing Service®)

Listing information last updated on June 19th, 2025 at 4:32pm MDT