

\$345,000 - 206 7327 118 Street, Edmonton

MLS® #E4443064

\$345,000

2 Bedroom, 2.00 Bathroom, 1,314 sqft

Condo / Townhouse on 0.00 Acres

Belgravia, Edmonton, AB

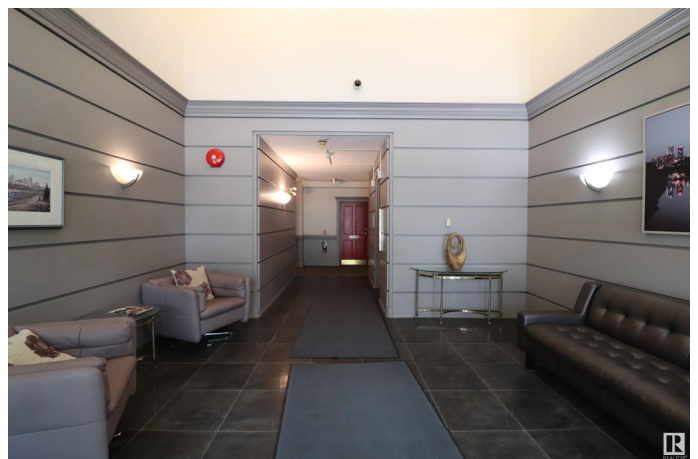
Welcome to Stratford in Belgravia in one of Edmonton's most sought-after postal codes! This 2 Bed 2 Bath condo features scenic views, a large patio & tandem underground parking w/ only 1 neighbour & a storage room. A spacious foyer greets you with easy access to the unit's storage/laundry room. The modern, white kitchen is large with some appliances updated & a spacious island. The dining room can easily fit a 6 person table, a great space to entertain! Opening onto the great room, there is plenty of space for a large sectional or multiple couches where you can look out the large patio window or read a book in front of the fireplace. The primary suite has space for a king sized bed w/ additional dressers + there is a walk in closet & full ensuite w/ jacuzzi tub & separate shower. The 2nd bedroom is also large w/ the main bath next to it, great for guests or your office! Enjoy your morning coffee on the spacious, covered patio & stay cool with A/C! Gym & party room located in building. Welcome HOME!

Built in 1992

Essential Information

MLS® # E4443064

Price \$345,000



Bedrooms	2
Bathrooms	2.00
Full Baths	2
Square Footage	1,314
Acres	0.00
Year Built	1992
Type	Condo / Townhouse
Sub-Type	Lowrise Apartment
Style	Single Level Apartment
Status	Active

Community Information

Address	206 7327 118 Street
Area	Edmonton
Subdivision	Belgravia
City	Edmonton
County	ALBERTA
Province	AB
Postal Code	T6G 1S5

Amenities

Amenities	On Street Parking, Air Conditioner, Deck, Exercise Room, Secured Parking, Security Door, Storage-In-Suite, Storage-Locker Room, See Remarks, Storage Cage
Parking Spaces	2
Parking	Tandem, Underground

Interior

Interior Features	ensuite bathroom
Appliances	Air Conditioning-Central, Dishwasher-Built-In, Dryer, Hood Fan, Oven-Microwave, Refrigerator, Stove-Electric, Vacuum System Attachments, Vacuum Systems, Washer, Window Coverings, See Remarks
Heating	Forced Air-1, In Floor Heat System, Water
Fireplace	Yes
Fireplaces	Corner, Mantel
# of Stories	4
Stories	1
Has Basement	Yes

Basement	None, No Basement
----------	-------------------

Exterior

Exterior	Wood, Vinyl
----------	-------------

Exterior Features	Backs Onto Park/Trees, Park/Reserve, Playground Nearby, Public Swimming Pool, Public Transportation, Shopping Nearby
-------------------	--

Roof	Asphalt Shingles
------	------------------

Construction	Wood, Vinyl
--------------	-------------

Foundation	Concrete Perimeter
------------	--------------------

School Information

Elementary	Belgravia
------------	-----------

Middle	Riverbend/McKernan
--------	--------------------

High	Strathcona
------	------------

Additional Information

Date Listed	June 18th, 2025
-------------	-----------------

Days on Market	1
----------------	---

Zoning	Zone 15
--------	---------

Condo Fee	\$684
-----------	-------

DATA IS DEEMED RELIABLE BUT IS NOT GUARANTEED ACCURATE BY THE REALTORS® ASSOCIATION OF EDMONTON. COPYRIGHT 2025 BY THE REALTORS® ASSOCIATION OF EDMONTON. ALL RIGHTS RESERVED. Trademarks are owned or controlled by the Canadian Real Estate Association (CREA) and identify real estate professionals who are members of CREA (REALTOR®, REALTORS®) and/or the quality of services they provide (MLS®, Multiple Listing Service®)

Listing information last updated on June 19th, 2025 at 5:17pm MDT