

## \$579,900 - 3411 Parker Loop, Edmonton

MLS® #E4443166

**\$579,900**

3 Bedroom, 2.50 Bathroom, 1,956 sqft

Single Family on 0.00 Acres

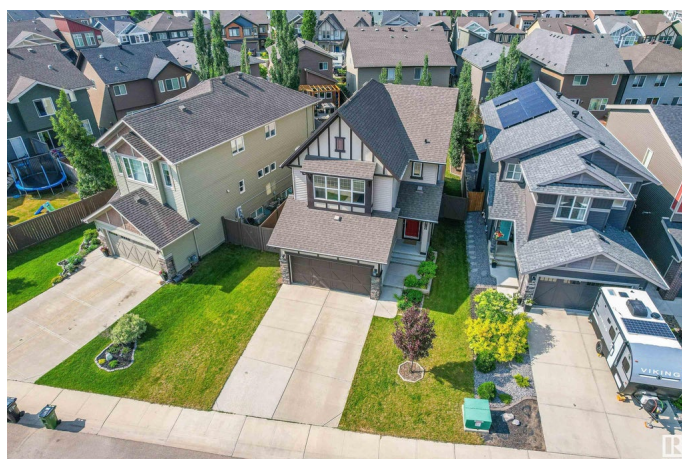
Paisley, Edmonton, AB

Welcome to this stunning 1,956 sq ft, 3 bed, 3 bath open-concept home by Homes by Avi! Situated on a 50 ft frontage non-zero lot, it features 9 ft ceilings on the main floor, engineered hardwood floors, triple-pane windows, and a modern kitchen with white cabinetry, quartz island, stainless steel appliances, coffee nook, and a walkthrough pantry/mudroom with main floor laundry. Oversized patio sliding glass doors lead to the custom deck and large SOUTH-facing backyardâ€”perfect for summer living! Stay cool with the brand new 2025 A/C. Upstairs offers a vaulted-ceiling bonus room, a primary suite with walk-in closet, double sinks, and a relaxing soaker tub, plus two more spacious bedrooms. The basement offers a large footprint with 2 windows and a 3-pc bathroom rough-inâ€”ready for your personal touch. Steps to the pond, walking trails, Paisley playground, and a 5-min walk to the dog park. Donâ€™t miss out!

Built in 2015

### Essential Information

MLS® #	E4443166
Price	\$579,900
Bedrooms	3
Bathrooms	2.50



Full Baths	2
Half Baths	1
Square Footage	1,956
Acres	0.00
Year Built	2015
Type	Single Family
Sub-Type	Detached Single Family
Style	2 Storey
Status	Active

### Community Information

Address	3411 Parker Loop
Area	Edmonton
Subdivision	Paisley
City	Edmonton
County	ALBERTA
Province	AB
Postal Code	T6W 3A8

### Amenities

Amenities	Air Conditioner, Ceiling 9 ft., Deck, No Animal Home, No Smoking Home, See Remarks, HRV System
Parking	Double Garage Attached

### Interior

Interior Features	ensuite bathroom
Appliances	Air Conditioning-Central, Dishwasher-Built-In, Dryer, Garage Opener, Microwave Hood Fan, Storage Shed, Stove-Electric, Washer, Window Coverings
Heating	Forced Air-1, Natural Gas
Stories	2
Has Basement	Yes
Basement	Full, Unfinished

### Exterior

Exterior	Wood, Vinyl
Exterior Features	Airport Nearby, Fenced, Golf Nearby, Landscaped, Playground Nearby, Public Transportation, Schools, Shopping Nearby
Roof	Asphalt Shingles

Construction	Wood, Vinyl
Foundation	Concrete Perimeter

**Additional Information**

Date Listed	June 19th, 2025
Days on Market	1
Zoning	Zone 55

DATA IS DEEMED RELIABLE BUT IS NOT GUARANTEED ACCURATE BY THE REALTORS® ASSOCIATION OF EDMONTON. COPYRIGHT 2025 BY THE REALTORS® ASSOCIATION OF EDMONTON. ALL RIGHTS RESERVED.Trademarks are owned or controlled by the Canadian Real Estate Association (CREA) and identify real estate professionals who are members of CREA (REALTOR®, REALTORS®) and/or the quality of services they provide (MLS®, Multiple Listing Service®)

Listing information last updated on June 20th, 2025 at 12:17am MDT