

Courtesy Of Ian Choi Of MaxWell Polaris

\$219,000 - 319 6315 135 Avenue, Edmonton

MLS® #E4450345

\$219,000

2 Bedroom, 2.00 Bathroom, 1,111 sqft
Condo / Townhouse on 0.00 Acres

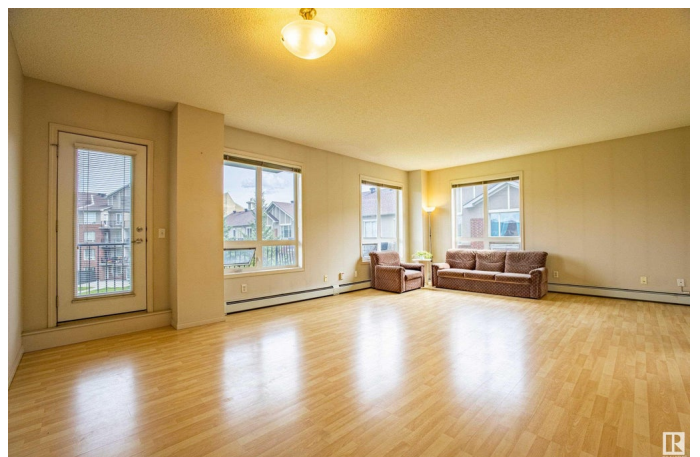
Belvedere, Edmonton, AB

Spacious and open 2-Bedroom Corner Unit in Holland Gardens located in the sought-after concrete building of Holland Gardensâ€”offering both durability and peace of mind. Enjoy 9 ft ceilings, large windows that flood the space with natural light, and views overlooking the beautifully landscaped courtyard. The kitchen features ample cabinetry that opens to the spacious living areaâ€”perfect for entertaining. The master bedroom includes a full ensuite, while the 2nd bedroom is ideally located across from the second full bath, offering privacy for roommates. Additional highlights include a sunny east-facing balcony with BBQ gasline, a HEATED UNDERGROUND parking with storage cage and an elevator conveniently located steps away. On-site fitness centre is also available. Condo fees cover all utilitiesâ€”heat, water, and electricity. Conveniently located within walking distance to the LRT, Londonderry Mall, schools, and public transit. Ideal for first time buyers or downsizers. Move-In Ready! Must See!

Built in 2006

Essential Information

MLS® #	E4450345
Price	\$219,000



Bedrooms	2
Bathrooms	2.00
Full Baths	2
Square Footage	1,111
Acres	0.00
Year Built	2006
Type	Condo / Townhouse
Sub-Type	Lowrise Apartment
Style	Single Level Apartment
Status	Active

Community Information

Address	319 6315 135 Avenue
Area	Edmonton
Subdivision	Belvedere
City	Edmonton
County	ALBERTA
Province	AB
Postal Code	T5A 5J7

Amenities

Amenities	Ceiling 9 ft., Exercise Room
Parking Spaces	1
Parking	Underground

Interior

Interior Features	ensuite bathroom
Appliances	Dishwasher-Built-In, Microwave Hood Fan, Refrigerator, Stacked Washer/Dryer, Stove-Electric, Window Coverings
Heating	Baseboard, Natural Gas
# of Stories	4
Stories	1
Has Basement	Yes
Basement	None, No Basement

Exterior

Exterior	Concrete, Brick, Stucco
Exterior Features	Playground Nearby, Public Swimming Pool, Public Transportation, Schools, Shopping Nearby

Roof	Asphalt Shingles
Construction	Concrete, Brick, Stucco
Foundation	Concrete Perimeter

Additional Information

Date Listed	July 30th, 2025
Days on Market	12
Zoning	Zone 02
Condo Fee	\$753

DATA IS DEEMED RELIABLE BUT IS NOT GUARANTEED ACCURATE BY THE REALTORS® ASSOCIATION OF EDMONTON. COPYRIGHT 2025 BY THE REALTORS® ASSOCIATION OF EDMONTON. ALL RIGHTS RESERVED. Trademarks are owned or controlled by the Canadian Real Estate Association (CREA) and identify real estate professionals who are members of CREA (REALTOR®, REALTORS®) and/or the quality of services they provide (MLS®, Multiple Listing Service®)

Listing information last updated on August 11th, 2025 at 2:17am MDT