

\$569,000 - 234 Brickyard Cove, Stony Plain

MLS® #E4451968

\$569,000

3 Bedroom, 2.50 Bathroom, 1,933 sqft

Single Family on 0.00 Acres

Brickyard, Stony Plain, AB

Enjoy breathtaking pond views from your KING SIZE bedroom & the main floor in this beautiful Stony Plain home. Set in a quiet, peaceful neighborhood, this home will impress. The Primary suite has a large walk-in closet, and an impressive 5-piece bathroom with a walk-in glass & tile shower and double sinks. The other 2 bedrooms are spacious with generous closet space. There are 3 bathrooms, and A/C as well. The bonus room is sunny with south-facing windows & vaulted ceilings. There's plenty of space for the whole family. The custom kitchen features built-in SS appliances, quartz countertops, and abundant storage, while the main floor laundry adds convenience. Outside, the beautifully landscaped yard offers a private retreat with a pond to enjoy, and the oversized double garage provides room for vehicles, tools, and toys. A perfect mix of comfort, elegance, and nature. Located close to Downtown Stony Plain, with shops and schools close by, it is the perfect family home.

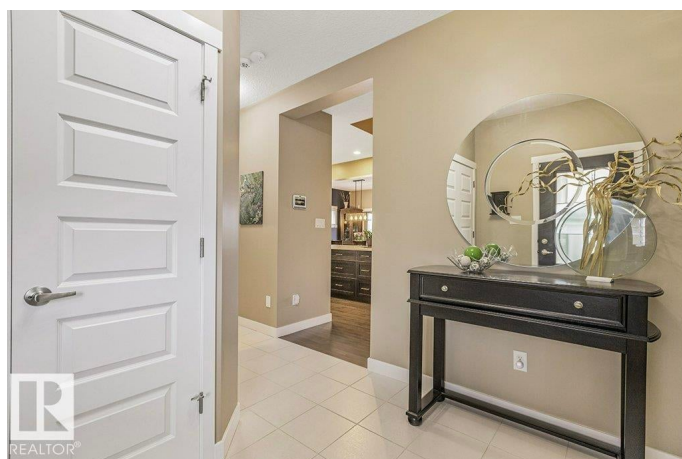
Built in 2016

Essential Information

MLS® # E4451968

Price \$569,000

Bedrooms 3



Bathrooms	2.50
Full Baths	2
Half Baths	1
Square Footage	1,933
Acres	0.00
Year Built	2016
Type	Single Family
Sub-Type	Detached Single Family
Style	2 Storey
Status	Active

Community Information

Address	234 Brickyard Cove
Area	Stony Plain
Subdivision	Brickyard
City	Stony Plain
County	ALBERTA
Province	AB
Postal Code	T7Z 0L1

Amenities

Amenities	Air Conditioner, Deck, Detectors Smoke
Parking Spaces	4
Parking	Double Garage Attached
Is Waterfront	Yes

Interior

Interior Features	ensuite bathroom
Appliances	Air Conditioning-Central, Dishwasher-Built-In, Dryer, Garage Control, Garage Opener, Hood Fan, Oven-Built-In, Oven-Microwave, Refrigerator, Storage Shed, Stove-Countertop Gas, Washer, See Remarks
Heating	Forced Air-1, Natural Gas
Fireplace	Yes
Fireplaces	Glass Door, Mantel
Stories	2
Has Basement	Yes
Basement	Full, Unfinished

Exterior

Exterior	Wood, Vinyl
Exterior Features	Fenced, Landscaped, No Back Lane, Schools, Shopping Nearby, Stream/Pond
Roof	Asphalt Shingles
Construction	Wood, Vinyl
Foundation	Concrete Perimeter

School Information

Elementary	St. Matthews
Middle	High Park
High	Memorial

Additional Information

Date Listed	August 8th, 2025
Days on Market	2
Zoning	Zone 91

DATA IS DEEMED RELIABLE BUT IS NOT GUARANTEED ACCURATE BY THE REALTORS® ASSOCIATION OF EDMONTON. COPYRIGHT 2025 BY THE REALTORS® ASSOCIATION OF EDMONTON. ALL RIGHTS RESERVED. Trademarks are owned or controlled by the Canadian Real Estate Association (CREA) and identify real estate professionals who are members of CREA (REALTOR®, REALTORS®) and/or the quality of services they provide (MLS®, Multiple Listing Service®)

Listing information last updated on August 10th, 2025 at 2:47pm MDT