

# \$530,000 - 97 Bonin Crescent, Beaumont

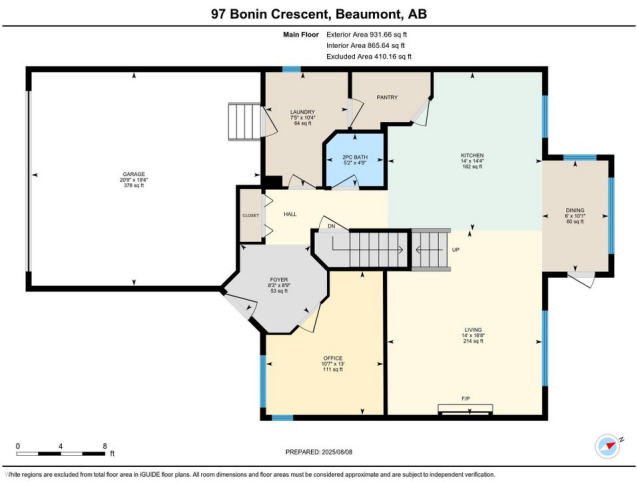
MLS® #E4451990

**\$530,000**

4 Bedroom, 2.50 Bathroom, 2,139 sqft  
Single Family on 0.00 Acres

Coloniale Estates (Beaumont), Beaumont, AB

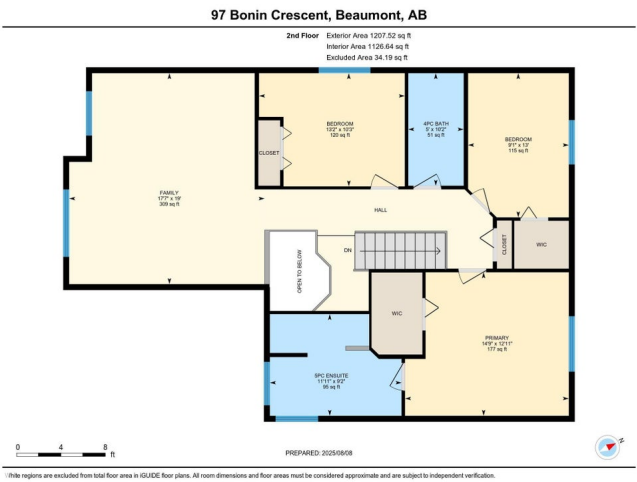
Gorgeous south-facing backyard oasis with towering trees, colourful gardens, and a huge private deck—perfect for summer BBQs or quiet mornings with coffee. This spotless Landmark-built home shines with fresh paint, brand-new carpet, and a long list of upgrades: roof, A/C, furnace, hot water tank, and underground sprinklers. The sun-filled kitchen features oversized windows, a walk-through pantry, and main floor laundry. Relax in the inviting family room or the vaulted bonus room. All bedrooms are spacious, including a king-sized primary suite with a spa-like 5-piece ensuite. Tucked away on a quiet crescent steps from the golf course, schools, and parks—this one is ready to impress!



Built in 2002

## Essential Information

MLS® #	E4451990
Price	\$530,000
Bedrooms	4
Bathrooms	2.50
Full Baths	2
Half Baths	1
Square Footage	2,139
Acres	0.00
Year Built	2002



Type	Single Family
Sub-Type	Detached Single Family
Style	2 Storey
Status	Active

### Community Information

Address	97 Bonin Crescent
Area	Beaumont
Subdivision	Coloniale Estates (Beaumont)
City	Beaumont
County	ALBERTA
Province	AB
Postal Code	T4X 1R9

### Amenities

Amenities	Air Conditioner, Deck, Sprinkler Sys-Underground
Parking Spaces	4
Parking	Double Garage Attached, Front Drive Access

### Interior

Interior Features	ensuite bathroom
Appliances	Dishwasher-Built-In, Dryer, Garage Control, Garage Opener, Refrigerator, Storage Shed, Stove-Electric, Vacuum System Attachments, Vacuum Systems, Washer, Window Coverings
Heating	Forced Air-1, Natural Gas
Fireplace	Yes
Fireplaces	Tile Surround
Stories	2
Has Basement	Yes
Basement	Full, Unfinished

### Exterior

Exterior	Wood, Vinyl
Exterior Features	Airport Nearby, Fenced, Golf Nearby, Playground Nearby, Schools, Shopping Nearby, Ski Hill Nearby
Roof	Asphalt Shingles
Construction	Wood, Vinyl
Foundation	Concrete Perimeter

### Additional Information

Date Listed August 8th, 2025

Days on Market 2

Zoning Zone 82

DATA IS DEEMED RELIABLE BUT IS NOT GUARANTEED ACCURATE BY THE REALTORS® ASSOCIATION OF EDMONTON. COPYRIGHT 2025 BY THE REALTORS® ASSOCIATION OF EDMONTON. ALL RIGHTS RESERVED. Trademarks are owned or controlled by the Canadian Real Estate Association (CREA) and identify real estate professionals who are members of CREA (REALTOR®, REALTORS®) and/or the quality of services they provide (MLS®, Multiple Listing Service®)

Listing information last updated on August 10th, 2025 at 2:47pm MDT