

\$394,707 - 5 Carlyle Crescent, Sherwood Park

MLS® #E4452070

\$394,707

3 Bedroom, 3.50 Bathroom, 1,363 sqft

Single Family on 0.00 Acres

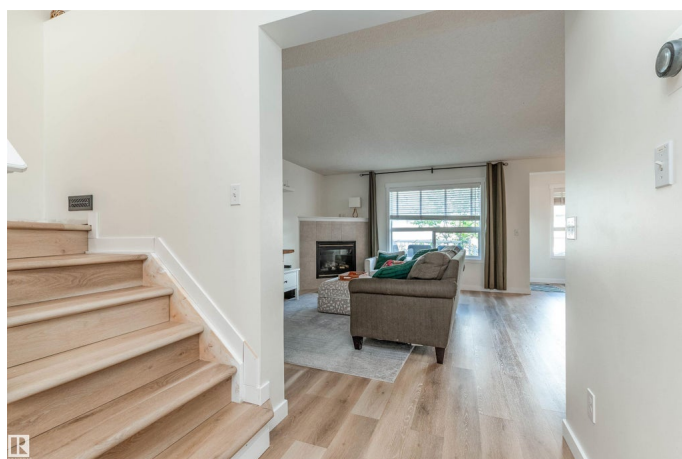
Lakeland Ridge, Sherwood Park, AB

Welcome to this BEAUTIFUL half duplex in Lakeland Ridge! Great location and value! Close to schools, parks, transit and shopping! A perfect opportunity for first-time home buyers or investors! Featuring a modern floor plan with 1362 square feet plus a FULLY FINISHED BASEMENT! Newer vinyl plank flooring and newer paint throughout. Spacious living room with corner gas fireplace. Open dining area and a lovely kitchen with newer appliances! There are a total of 3 bedrooms and 4 bathrooms. Upstairs are the 2 Primary Bedrooms with lovely 4 piece ensuites and walk-in closets! Laundry closet area too. The basement offers the 3rd bedroom, family room, 3 piece bathroom and storage space. Awesome backyard that is fully fenced and landscaped plus there is a lovely deck to enjoy. NEW hot water tank and CENTRAL A/C too! Single attached garage and great curb appeal! NO CONDO FEES! See it today! Visit REALTOR® website for more information.

Built in 2005

Essential Information

MLS® #	E4452070
Price	\$394,707
Bedrooms	3
Bathrooms	3.50



Full Baths	3
Half Baths	1
Square Footage	1,363
Acres	0.00
Year Built	2005
Type	Single Family
Sub-Type	Half Duplex
Style	2 Storey
Status	Active

Community Information

Address	5 Carlyle Crescent
Area	Sherwood Park
Subdivision	Lakeland Ridge
City	Sherwood Park
County	ALBERTA
Province	AB
Postal Code	T8H 2T6

Amenities

Amenities	Air Conditioner, Deck
Parking	Single Garage Attached

Interior

Interior Features	ensuite bathroom
Appliances	Dishwasher-Built-In, Dryer, Hood Fan, Refrigerator, Stove-Electric, Washer, Window Coverings
Heating	Forced Air-1, Natural Gas
Fireplace	Yes
Fireplaces	Corner
Stories	3
Has Basement	Yes
Basement	Full, Finished

Exterior

Exterior	Wood, Stone, Vinyl
Exterior Features	Fenced, Landscaped, Public Transportation, Schools, Shopping Nearby
Roof	Asphalt Shingles
Construction	Wood, Stone, Vinyl

Foundation Concrete Perimeter

Additional Information

Date Listed August 8th, 2025

Days on Market 1

Zoning Zone 25

DATA IS DEEMED RELIABLE BUT IS NOT GUARANTEED ACCURATE BY THE REALTORS® ASSOCIATION OF EDMONTON. COPYRIGHT 2025 BY THE REALTORS® ASSOCIATION OF EDMONTON. ALL RIGHTS RESERVED.Trademarks are owned or controlled by the Canadian Real Estate Association (CREA) and identify real estate professionals who are members of CREA (REALTOR®, REALTORS®) and/or the quality of services they provide (MLS®, Multiple Listing Service®)

Listing information last updated on August 9th, 2025 at 7:02pm MDT