

\$104,900 - 201 10035 164 Street, Edmonton

MLS® #E4458114

\$104,900

2 Bedroom, 1.00 Bathroom, 933 sqft

Condo / Townhouse on 0.00 Acres

Glenwood (Edmonton), Edmonton, AB

Bright and well cared for two bedroom second floor corner unit close to shopping and transit! This updated and affordable 932 sq/ft home boasts a large master bedroom, stainless steel appliances, upgraded four piece bath, and a lovely balcony tucked behind some large trees.

This building is pet friendly (with board approval) and has had its windows replaced. Condo fees are \$643.95/mth and comes with one assigned parking stall.

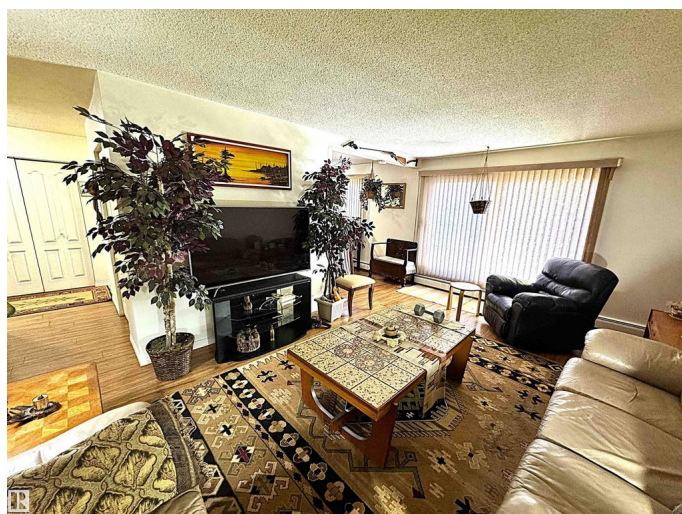
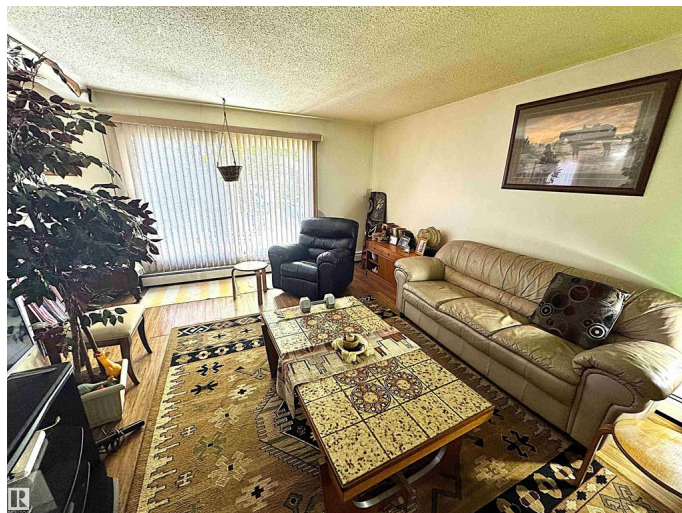
Built in 1975

Essential Information

| | |
|----------------|------------------------|
| MLS® # | E4458114 |
| Price | \$104,900 |
| Bedrooms | 2 |
| Bathrooms | 1.00 |
| Full Baths | 1 |
| Square Footage | 933 |
| Acres | 0.00 |
| Year Built | 1975 |
| Type | Condo / Townhouse |
| Sub-Type | Lowrise Apartment |
| Style | Single Level Apartment |
| Status | Active |

Community Information

Address 201 10035 164 Street



| | |
|-------------|---------------------|
| Area | Edmonton |
| Subdivision | Glenwood (Edmonton) |
| City | Edmonton |
| County | ALBERTA |
| Province | AB |
| Postal Code | T5P 4L4 |

Amenities

| | |
|----------------|--|
| Amenities | Security Door, Storage-In-Suite, Vinyl Windows |
| Parking Spaces | 1 |
| Parking | Stall |

Interior

| | |
|--------------|--|
| Appliances | Refrigerator, Stove-Electric, Window Coverings |
| Heating | Hot Water, Natural Gas |
| # of Stories | 3 |
| Stories | 1 |
| Has Basement | Yes |
| Basement | None, No Basement |

Exterior

| | |
|-------------------|---|
| Exterior | Wood, Stucco |
| Exterior Features | Landscaped, Public Transportation, Schools, See Remarks |
| Roof | Tar & Gravel |
| Construction | Wood, Stucco |
| Foundation | Concrete Perimeter |

School Information

| | |
|------------|---------------------|
| Elementary | Aleda Patterson k-3 |
| Middle | Alex Janvier 4-9 |
| High | Jasper Place |

Additional Information

| | |
|-------------|----------------------|
| Date Listed | September 17th, 2025 |
| Zoning | Zone 22 |
| Condo Fee | \$644 |

DATA IS DEEMED RELIABLE BUT IS NOT GUARANTEED ACCURATE BY THE REALTORS® ASSOCIATION OF EDMONTON. COPYRIGHT 2025 BY THE REALTORS® ASSOCIATION OF EDMONTON. ALL RIGHTS RESERVED. Trademarks are owned or controlled by the Canadian Real Estate Association (CREA) and identify real estate professionals who are members of CREA (REALTOR®, REALTORS®) and/or the quality of services they

provide (MLS®®, Multiple Listing Service®®)
Listing information last updated on September 17th, 2025 at 3:32pm MDT