

\$779,000 - 478 Ainslie Crescent, Edmonton

MLS® #E4459019

\$779,000

5 Bedroom, 4.00 Bathroom, 2,723 sqft

Single Family on 0.00 Acres

Ambleside, Edmonton, AB

Step inside and discover a home that feels larger with every glance. This Ambleside gem delivers comfort and lifestyle beyond the front door. The open to below entrance welcomes you with natural light and volume, showcasing 2,723 sq. ft. (a.g) and 3,852 sq. ft. total. An open concept kitchen, dining, and living area with granite counters and rich cabinetry brings everyone together, from breakfast at the island to weekend movie nights. A flexible main floor room with a nearby full washroom adds everyday ease. Upstairs, a spacious bonus room adds versatility, while the spa inspired ensuite with steam shower and jet soaker tub creates a private retreat. The finished basement expands your options, and the oversized garage adds practicality. Outdoors, mature trees and professional landscaping elevate curb appeal, while the yard offers room for family, pets, and play. Just steps away from the Currents of Windermere Plaza, this pristine original owner home is a must see. *Some photos have been virtually staged.

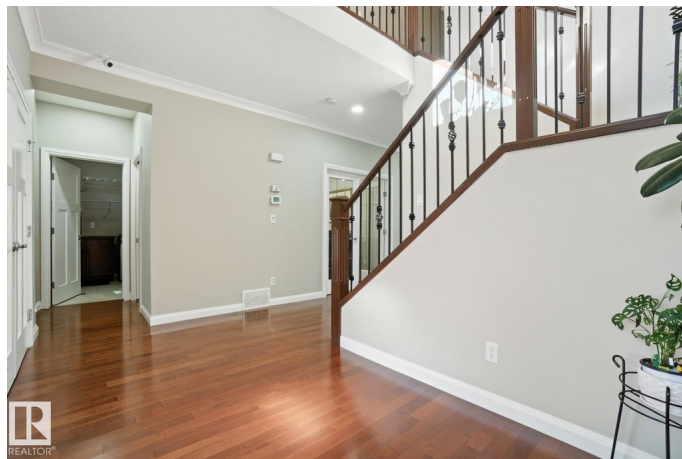
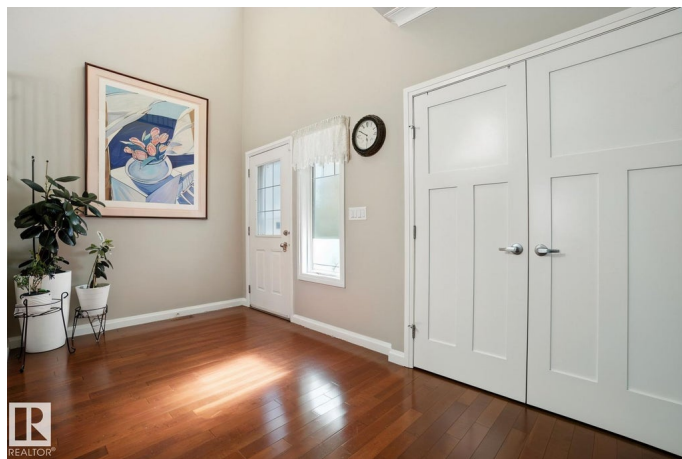
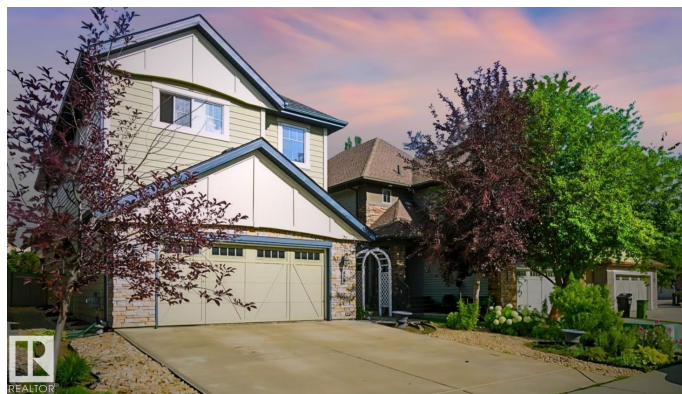
Built in 2010

Essential Information

MLS® # E4459019

Price \$779,000

Bedrooms 5



| | |
|----------------|------------------------|
| Bathrooms | 4.00 |
| Full Baths | 4 |
| Square Footage | 2,723 |
| Acres | 0.00 |
| Year Built | 2010 |
| Type | Single Family |
| Sub-Type | Detached Single Family |
| Style | 2 Storey |
| Status | Active |

Community Information

| | |
|-------------|----------------------|
| Address | 478 Ainslie Crescent |
| Area | Edmonton |
| Subdivision | Ambleside |
| City | Edmonton |
| County | ALBERTA |
| Province | AB |
| Postal Code | T6W 0H7 |

Amenities

| | |
|-----------|------------------------------------|
| Amenities | Ceiling 9 ft., Intercom |
| Parking | Double Garage Attached, Over Sized |

Interior

| | |
|-------------------|--|
| Interior Features | ensuite bathroom |
| Appliances | Alarm/Security System, Dishwasher - Energy Star, Dryer, Garage Opener, Microwave Hood Fan, Refrigerator-Energy Star, Storage Shed, Stove-Electric, Washer - Energy Star, Stove-Induction |
| Heating | Forced Air-1, Forced Air-2, Natural Gas |
| Stories | 3 |
| Has Basement | Yes |
| Basement | Full, Finished |

Exterior

| | |
|-------------------|--|
| Exterior | Wood, Fiber Cement |
| Exterior Features | Airport Nearby, Fenced, Golf Nearby, Low Maintenance Landscape, Playground Nearby, Recreation Use, Schools |
| Roof | Asphalt Shingles |
| Construction | Wood, Fiber Cement |

Foundation Slab

Additional Information

Date Listed September 23rd, 2025
Days on Market 1
Zoning Zone 56
HOA Fees 100
HOA Fees Freq. Annually

DATA IS DEEMED RELIABLE BUT IS NOT GUARANTEED ACCURATE BY THE REALTORS® ASSOCIATION OF EDMONTON. COPYRIGHT 2025 BY THE REALTORS® ASSOCIATION OF EDMONTON. ALL RIGHTS RESERVED.Trademarks are owned or controlled by the Canadian Real Estate Association (CREA) and identify real estate professionals who are members of CREA (REALTOR®, REALTORS®) and/or the quality of services they provide (MLS®, Multiple Listing Service®)
Listing information last updated on September 24th, 2025 at 9:32am MDT