

\$399,000 - 15208 58 Street, Edmonton

MLS® #E4459147

\$399,000

4 Bedroom, 2.50 Bathroom, 1,221 sqft

Single Family on 0.00 Acres

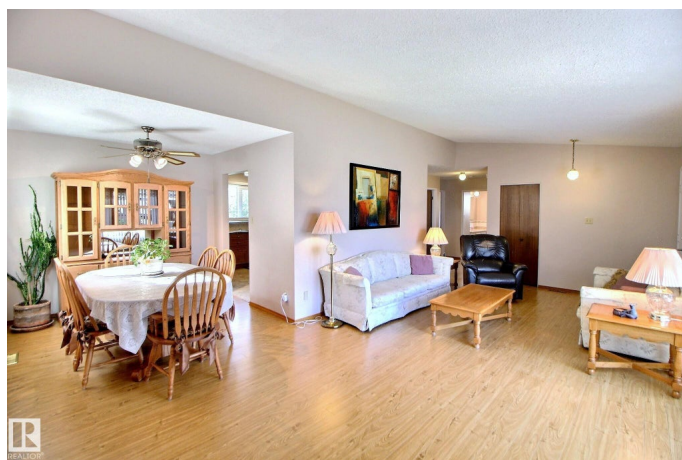
Mcleod, Edmonton, AB

Tucked away on a quiet street in a fantastic location, this lovingly well-maintained home offers the perfect blend of comfort, character and convenience. Inside, you'll find an updated kitchen with plenty of storage, plus a spacious living and dining area, perfect for family life or entertaining friends. The primary bedroom features his/hers closets and a private ensuite. Two additional bedrooms upstairs plus a fourth bedroom downstairs provide plenty of space. The large basement rec room includes a retro wet bar, perfect for entertaining, as well as a laundry area w/ utility sinks. Step outside to a beautifully kept yard with fruit trees, a large garden plot, and an oversized 24x26 double garage. Just minutes from schools, shopping, and recreational facilities, this home is ideal for families of all sizes. Immaculately clean, cared for, and move-in ready - this home is a must-see!

Built in 1974

Essential Information

MLS® #	E4459147
Price	\$399,000
Bedrooms	4
Bathrooms	2.50
Full Baths	2
Half Baths	1



Square Footage	1,221
Acres	0.00
Year Built	1974
Type	Single Family
Sub-Type	Detached Single Family
Style	Bungalow
Status	Active

Community Information

Address	15208 58 Street
Area	Edmonton
Subdivision	Mcleod
City	Edmonton
County	ALBERTA
Province	AB
Postal Code	T5A 2M2

Amenities

Amenities	No Animal Home, No Smoking Home, Parking-Extra, Patio, Wet Bar
Parking	Double Garage Detached, Over Sized, Parking Pad Cement/Paved

Interior

Interior Features	ensuite bathroom
Appliances	Dishwasher-Built-In, Dryer, Freezer, Garage Control, Garage Opener, Microwave Hood Fan, Refrigerator, Stove-Electric, Washer, Window Coverings
Heating	Forced Air-1, Natural Gas
Stories	2
Has Basement	Yes
Basement	Full, Finished

Exterior

Exterior	Wood, Stucco, Vinyl
Exterior Features	Back Lane, Fenced, Fruit Trees/Shrubs, Landscaped, Playground Nearby, Public Transportation, Schools, Shopping Nearby, Treed Lot, Vegetable Garden
Roof	Asphalt Shingles
Construction	Wood, Stucco, Vinyl
Foundation	Concrete Perimeter

School Information

Elementary	McLeod Elementary
Middle	Steele Heights Jr High
High	M.E. Lazerte High School

Additional Information

Date Listed	September 23rd, 2025
Days on Market	1
Zoning	Zone 02

DATA IS DEEMED RELIABLE BUT IS NOT GUARANTEED ACCURATE BY THE REALTORS® ASSOCIATION OF EDMONTON. COPYRIGHT 2025 BY THE REALTORS® ASSOCIATION OF EDMONTON. ALL RIGHTS RESERVED.Trademarks are owned or controlled by the Canadian Real Estate Association (CREA) and identify real estate professionals who are members of CREA (REALTOR®, REALTORS®) and/or the quality of services they provide (MLS®, Multiple Listing Service®)

Listing information last updated on September 24th, 2025 at 9:32am MDT