

# \$199,500 - 103 9640 105 Street, Edmonton

MLS® #E4461090

**\$199,500**

2 Bedroom, 2.00 Bathroom, 937 sqft

Condo / Townhouse on 0.00 Acres

Rossdale, Edmonton, AB

\*Please note\* property is sold "as is where is at time of possession". No warranties or representations.

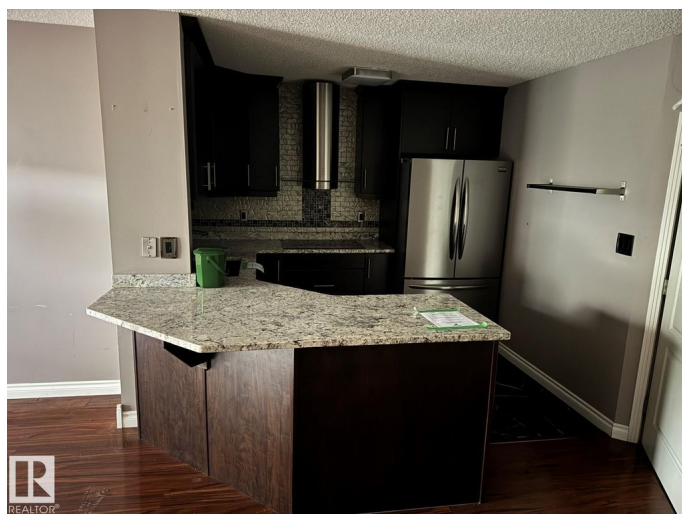
Built in 1995

## Essential Information

MLS® #	E4461090
Price	\$199,500
Bedrooms	2
Bathrooms	2.00
Full Baths	2
Square Footage	937
Acres	0.00
Year Built	1995
Type	Condo / Townhouse
Sub-Type	Lowrise Apartment
Style	Single Level Apartment
Status	Active

## Community Information

Address	103 9640 105 Street
Area	Edmonton
Subdivision	Rossdale
City	Edmonton
County	ALBERTA
Province	AB
Postal Code	T5K 1A4



## Amenities

Amenities	See Remarks
Parking	See Remarks

## Interior

Interior Features	ensuite bathroom
Appliances	See Remarks
Heating	Forced Air-1, Natural Gas
# of Stories	4
Stories	1
Has Basement	Yes
Basement	None, No Basement

## Exterior

Exterior	Wood, Vinyl
Exterior Features	See Remarks
Roof	Asphalt Shingles
Construction	Wood, Vinyl
Foundation	Concrete Perimeter

## Additional Information

Date Listed	October 6th, 2025
Days on Market	2
Zoning	Zone 12
RE / Bank Owned	Yes
Condo Fee	\$535

DATA IS DEEMED RELIABLE BUT IS NOT GUARANTEED ACCURATE BY THE REALTORS® ASSOCIATION OF EDMONTON. COPYRIGHT 2025 BY THE REALTORS® ASSOCIATION OF EDMONTON. ALL RIGHTS RESERVED. Trademarks are owned or controlled by the Canadian Real Estate Association (CREA) and identify real estate professionals who are members of CREA (REALTOR®, REALTORS®) and/or the quality of services they provide (MLS®, Multiple Listing Service®)

Listing information last updated on October 8th, 2025 at 1:02am MDT