

# \$194,800 - 102 11511 27 Avenue, Edmonton

MLS® #E4461095

**\$194,800**

2 Bedroom, 1.50 Bathroom, 872 sqft

Condo / Townhouse on 0.00 Acres

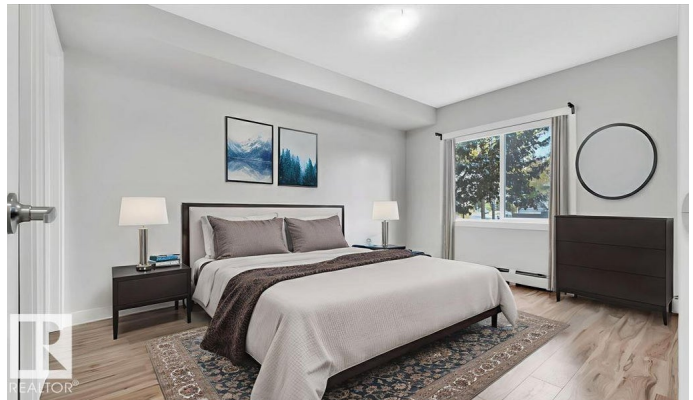
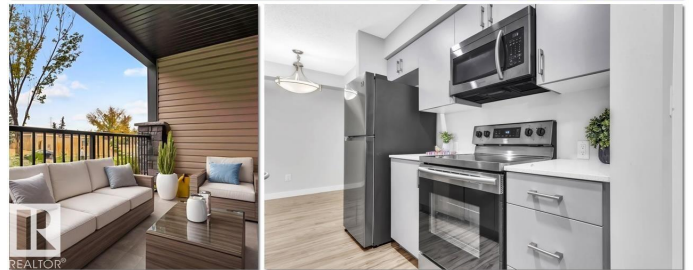
Blue Quill, Edmonton, AB

Why rent when you can own - for less?! This stylish & renovated 2-bdrm, 1.5 bath condo in the desirable Blue Quill community delivers modern living with unbeatable value. Every detail has been thoughtfully designed - from the open-concept layout and quartz countertops to the in-suite laundry with extra storage, recent renovations & heated underground parking. Bdrms are a good size & the primary offers an ensuite. Enjoy your morning coffee or evening wine on the large balcony that is a perfect retreat. The building is a standout - secure, well-managed, with great security. Low condo fees include heat, water, & waste removal, plus there's tons of visitor parking and a pet-friendly policy (with board approval). Perfectly positioned near transit, shopping, schools, parks & walking paths, you'll love how effortless everyday life feels here. Modern comfort, prime location & better than renting - this Blue Quill condo checks every box. Move in, settle down & start loving where you live!

Built in 2019

## Essential Information

MLS® #	E4461095
Price	\$194,800
Bedrooms	2



Bathrooms	1.50
Full Baths	1
Half Baths	1
Square Footage	872
Acres	0.00
Year Built	2019
Type	Condo / Townhouse
Sub-Type	Lowrise Apartment
Style	Single Level Apartment
Status	Active

### Community Information

Address	102 11511 27 Avenue
Area	Edmonton
Subdivision	Blue Quill
City	Edmonton
County	ALBERTA
Province	AB
Postal Code	T6J 7J8

### Amenities

Amenities	No Smoking Home, Parking-Extra, Parking-Visitor, Secured Parking, Security Door, Storage-In-Suite
Parking	Underground

### Interior

Interior Features	ensuite bathroom
Appliances	Dishwasher-Built-In, Dryer, Microwave Hood Fan, Refrigerator, Stove-Electric, Washer, Window Coverings
Heating	Baseboard, Natural Gas
# of Stories	4
Stories	1
Has Basement	Yes
Basement	None, No Basement

### Exterior

Exterior	Wood, Stone, Vinyl
Exterior Features	Playground Nearby, Public Transportation, Schools, Shopping Nearby, See Remarks

Roof	Asphalt Shingles
Construction	Wood, Stone, Vinyl
Foundation	Concrete Perimeter

**Additional Information**

Date Listed	October 6th, 2025
Days on Market	2
Zoning	Zone 16
Condo Fee	\$489

DATA IS DEEMED RELIABLE BUT IS NOT GUARANTEED ACCURATE BY THE REALTORS® ASSOCIATION OF EDMONTON. COPYRIGHT 2025 BY THE REALTORS® ASSOCIATION OF EDMONTON. ALL RIGHTS RESERVED.Trademarks are owned or controlled by the Canadian Real Estate Association (CREA) and identify real estate professionals who are members of CREA (REALTOR®, REALTORS®) and/or the quality of services they provide (MLS®, Multiple Listing Service®)

Listing information last updated on October 8th, 2025 at 12:02pm MDT