

\$489,900 - 5403 39a Avenue, Edmonton

MLS® #E4461150

\$489,900

4 Bedroom, 3.50 Bathroom, 1,752 sqft

Single Family on 0.00 Acres

Greenview (Edmonton), Edmonton, AB

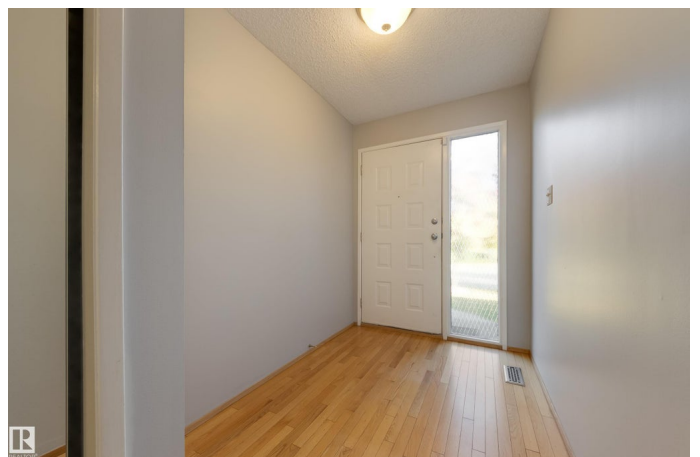
Large family? Welcome to this meticulously maintained FORMER SHOW HOME with tons of upgrades. Unique floorplan that features more than 2600 sq ft of living space, incl 4 bdrms, 3 1/2 baths, bonus room with soaring 14' ceiling, floor-to-ceiling windows (with electric blinds) & a beautiful modern horizontal fireplace. There are 4 fully developed, full-height levels. Renovated kitchen w stainless appliances, Corian counters, and a breakfast nook, all leading to the zero-maintenance composite deck w remote-controlled awning. Large dining room, front room & half bath on the main level, & upper level primary suite featuring walk through closets & full ensuite. Two more good-sized bdrms & bath on the upper floor & fully developed lower level with another full bath, family room, 4th bdrm, laundry/work space and excellent mechanicals. The huge, sunny yard has a beautiful perennial border & storage shed. Double attached garage, exposed aggregate driveway & walkway, new 50yr shingles, newer fence & more upgrades.

Built in 1978

Essential Information

MLS® # E4461150

Price \$489,900



Bedrooms	4
Bathrooms	3.50
Full Baths	3
Half Baths	1
Square Footage	1,752
Acres	0.00
Year Built	1978
Type	Single Family
Sub-Type	Detached Single Family
Style	4 Level Split
Status	Active

Community Information

Address	5403 39a Avenue
Area	Edmonton
Subdivision	Greenview (Edmonton)
City	Edmonton
County	ALBERTA
Province	AB
Postal Code	T6L 2E3

Amenities

Amenities	Closet Organizers, Deck, Vaulted Ceiling
Parking	Double Garage Attached

Interior

Interior Features	ensuite bathroom
Appliances	Alarm/Security System, Dishwasher-Built-In, Dryer, Fan-Ceiling, Garage Control, Garage Opener, Hood Fan, Refrigerator, Storage Shed, Stove-Electric, Washer, Window Coverings, See Remarks
Heating	Forced Air-1, Natural Gas
Fireplace	Yes
Fireplaces	See Remarks
Stories	4
Has Basement	Yes
Basement	Full, Finished

Exterior

Exterior	Wood
----------	------

Exterior Features	Back Lane, Fenced, Golf Nearby, Landscaped, Playground Nearby, Public Transportation, Schools, Shopping Nearby
Roof	Asphalt Shingles
Construction	Wood
Foundation	Slab

Additional Information

Date Listed	October 7th, 2025
Days on Market	1
Zoning	Zone 29

DATA IS DEEMED RELIABLE BUT IS NOT GUARANTEED ACCURATE BY THE REALTORS® ASSOCIATION OF EDMONTON. COPYRIGHT 2025 BY THE REALTORS® ASSOCIATION OF EDMONTON. ALL RIGHTS RESERVED.Trademarks are owned or controlled by the Canadian Real Estate Association (CREA) and identify real estate professionals who are members of CREA (REALTOR®, REALTORS®) and/or the quality of services they provide (MLS®, Multiple Listing Service®)

Listing information last updated on October 8th, 2025 at 6:17am MDT